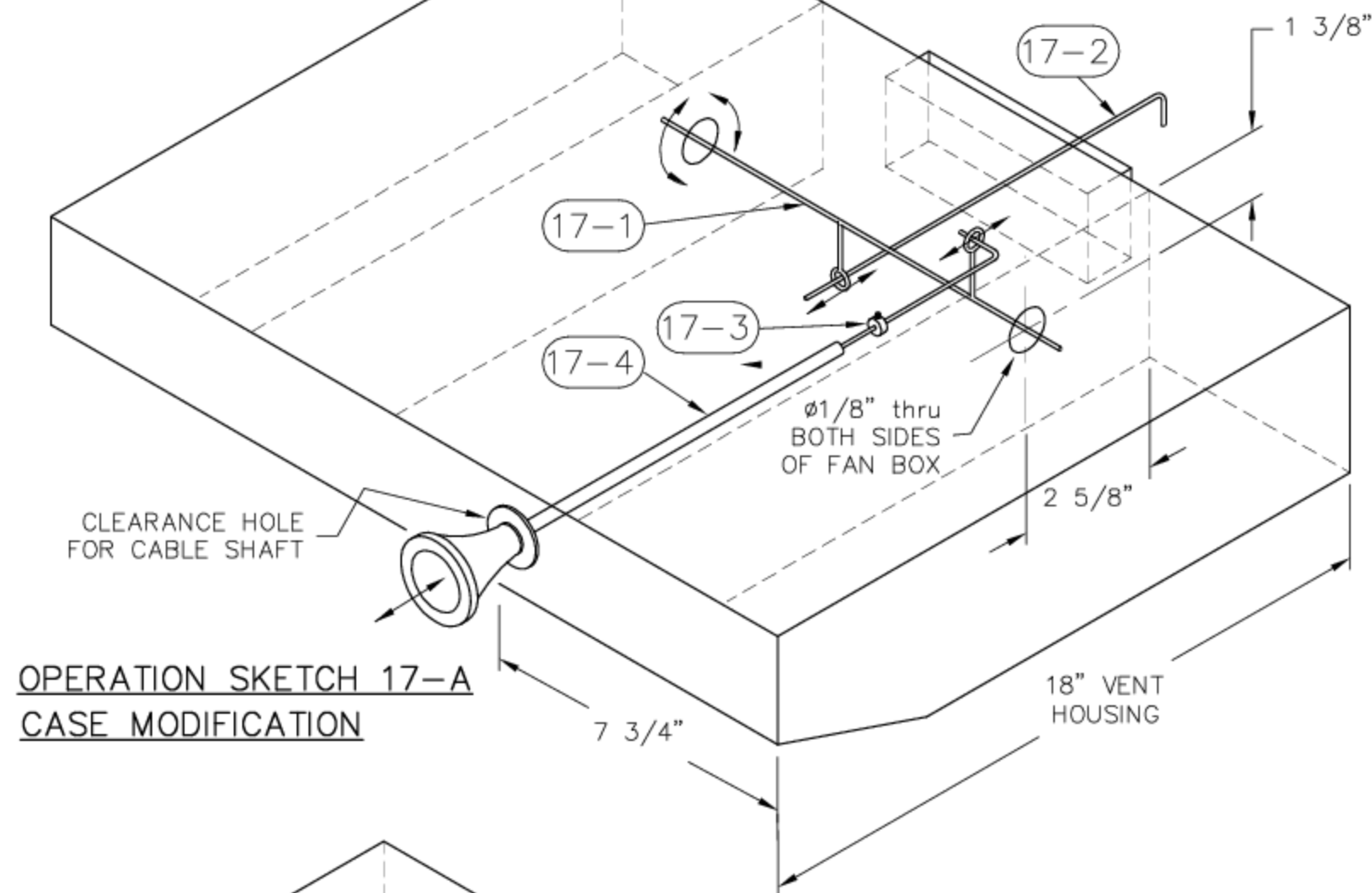


OBVIOUSLY THIS MOUNT IS CAMPER & VENT SPECIFIC.

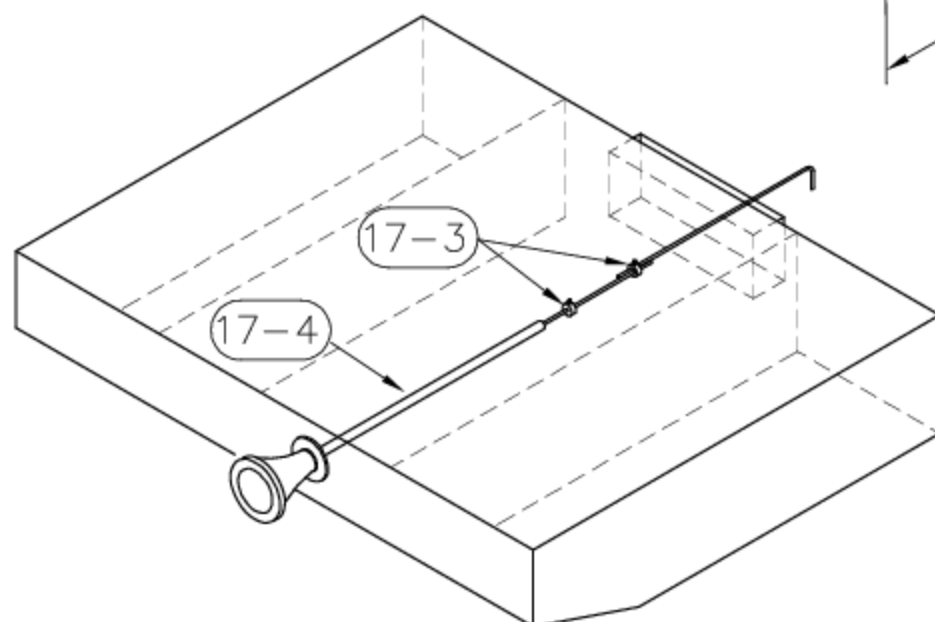
ALL DIMENSIONS ARE REFERENCE ONLY

17-3 CABLE STOPS NOT SHOWN  
EXCEPT AT PULL STOP LOCATION.  
INNER & OUTER DOORS NOT SHOWN

1/8" HOLE IN MY OUTER DOOR WAS @1/2"  
FROM CENTER, 1" UP FROM BOTTOM. INNER  
DOOR 1/8" SLOT WAS 1/4" TO 3/4" FROM  
BOTTOM. YOURS MAY VARY



OPERATION SKETCH 17-A  
CASE MODIFICATION



ALTERNATE CABLE PUSH/PULL

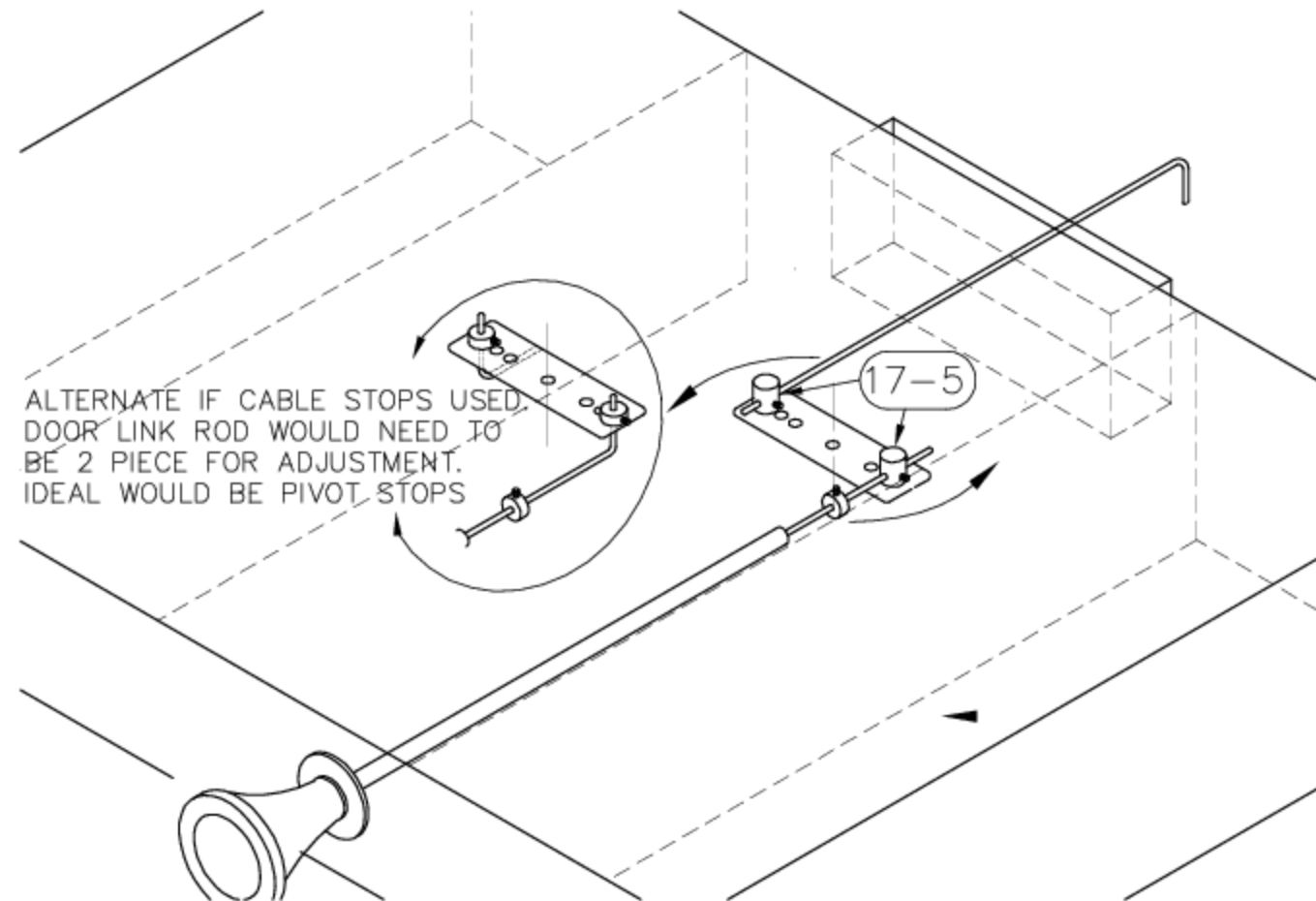
NON REVERSING PUSH/PULL.  
KNOB PUSHED IN DOORS OPEN,  
KNOB PULLED OUT DOORS CLOSED.  
USE CABLE STOP 17-3 TO LIMIT DOOR CLOSED  
TRAVEL. CUT CABLE WIRE (OR MAKE LINK ROD)  
OVERLAPPING LENGTHS FOR LENGTH ADJUSTMENT  
AND REMOVABILITY OF VENT. USING 17-3  
W/LARGER ID, ADJUST WHEN KNOB IN DOOR IS IN  
FULL OPEN POSITION, CLAMP 2 WIRE SECTIONS  
TOGETHER. PLACE ANOTHER 17-3 THAT HITS  
CABLE SHEATH WHEN DOOR FULLY CLOSED

## BILL OF MATERIALS

<http://ourelkhorn.itgo.com/vent.htm>

MARK			DESCRIPTION	TOTAL QTY.	SPECIFICATION	WEIGHT (TOTALS)	PURCHASING NUMBER
FIELD ASSEMBLY	SHIPPING PIECE	PIECE					
17-B		1	17-A	1	-	-	

ALTERNATE IF CABLE STOPS USED.  
DOOR LINK ROD WOULD NEED TO  
BE 2 PIECE FOR ADJUSTMENT.  
IDEAL WOULD BE PIVOT STOPS



## ALTERNATE USING FLAT BAR PIVOT

LENGTH OF FLAT BAR ~3-4" \SET SO YOU HAVE MIN. OF  
1 1/2 TRAVEL. A CENTER STAND OFF REQUIRED FOR PIVOT  
BAR-NOT DRAWN (Simple hat)...PIVOT 17-5 SHOWN UP  
FOR CLARITY SHOULD BE MOUNTED ON OTHER SIDE OF  
BAR. CHANGING DISTANCE FROM CENTER WILL CHANGE  
RELATION SHIP OF TRAVEL BETWEEN DOOR LINK ROD &  
CABLE HANDLE.

Original design but not followed thru. Would be easier  
to retro fit with case installed. Simpler fabrication-  
Not considered; Due to elevation difference between  
vent face and doors some allowance needs to be  
made. Possibly bending link rod but more probable  
consideration to minimize odd lateral force would be  
bending end(s) of pivot bar to match required  
elevation(s).



STANDARDS:		OUR ELKHORN		SAN LUIS OBISPO, CA		CHECKED BY/DATE		DRAWN BY/DATE		NO. REVISION		BY DATE	
B /VENT		THIS DRAWING HAS BEEN PREPARED FOR AND IS THE PROPERTY OF ME. DO NOT USE TO BUILD OR CAUSE TO CONSTRUCT ANY ITEM.		AND DEEMED TO BE COMMERCIALY INSENSITIVE. IT IS TO BE USED ONLY IN CONNECTION WITH PERFORMANCE OF WORK BY ME, AND IS TO BE SAFEGUARDED AGAINST BOTH DELIBERATE AND INADVERTENT DISCLOSURE TO ANY IDIOT OR MORON. REPRODUCTION IN WHOLE OR IN PART FOR ANY PURPOSE MAY CAUSE INJURY OR DEATH, AND IS EXPRESSLY FORBIDDEN.		1		MAG 04/10/12		DESCRIPTION:		VENT DOOR ACTUATOR OPTIONS	
										18 VENTLINE SMALL DUCT		PRELIMINARY	
										SCALE: NOT TO SCALE		REV. 0	
										DRAWING NUMBER		PAGE 2 OF 2	