

OBVIOUSLY THIS MOUNT IS CAMPER & VENT SPECIFIC.

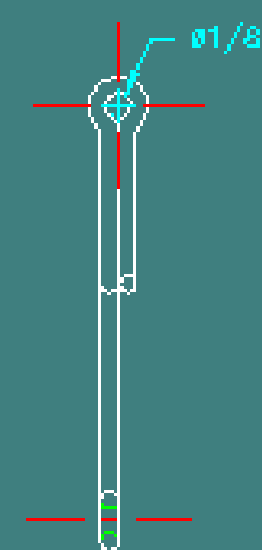
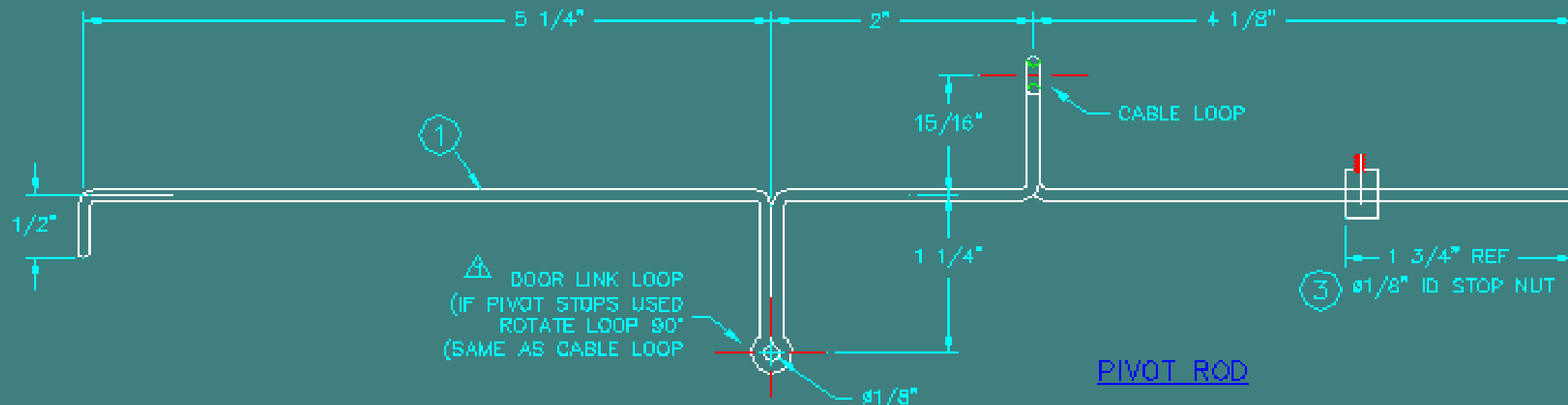
DIMENSIONS ARE REFERENCE .

BILL OF MATERIALS

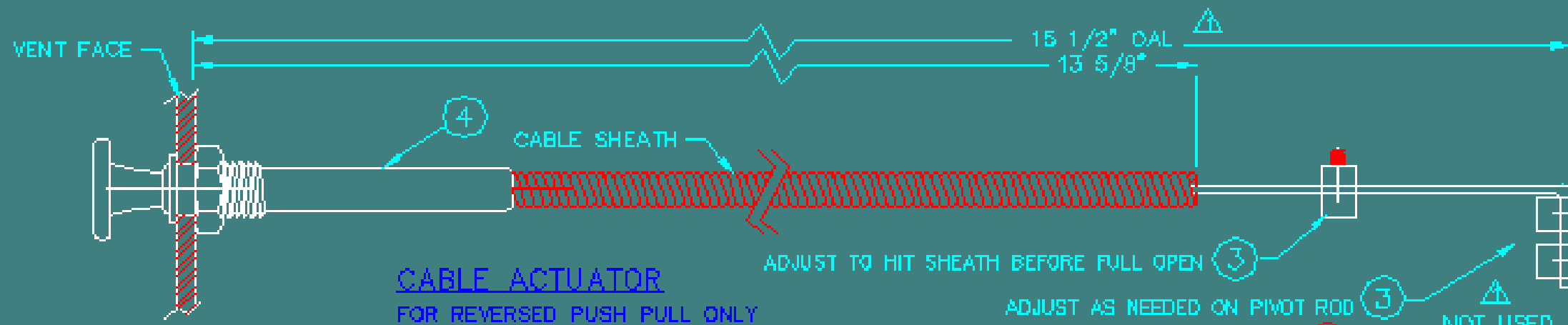
ITEM	QTY	DESCRIPTION	TOTAL QTY	SPECIFICATION	WEIGHT (TOTALS)	PURCHASING NUMBER
17-A	1	Ø3/32 MIN to Ø1/8" ROD x ~17" LONG BEND AS SHOWN	1	STEEL	—	
	2	Ø3/32 MIN to Ø1/8" ROD x ~5 1/2" LONG BEND AS SHOWN	2	ALUMINUM	—	
	3	Ø1/8" OD STOP NUT W/ 3/8" LONG MIN SET SCREW	4	STEEL	—	
	4	THROTTLE/CHOKE CABLE (SUB STIFF WIRE/ROD ~16")	1	STEEL	—	
	5	OPTIONAL PIVOT STOPS SEE NOTE	4	STEEL	—	



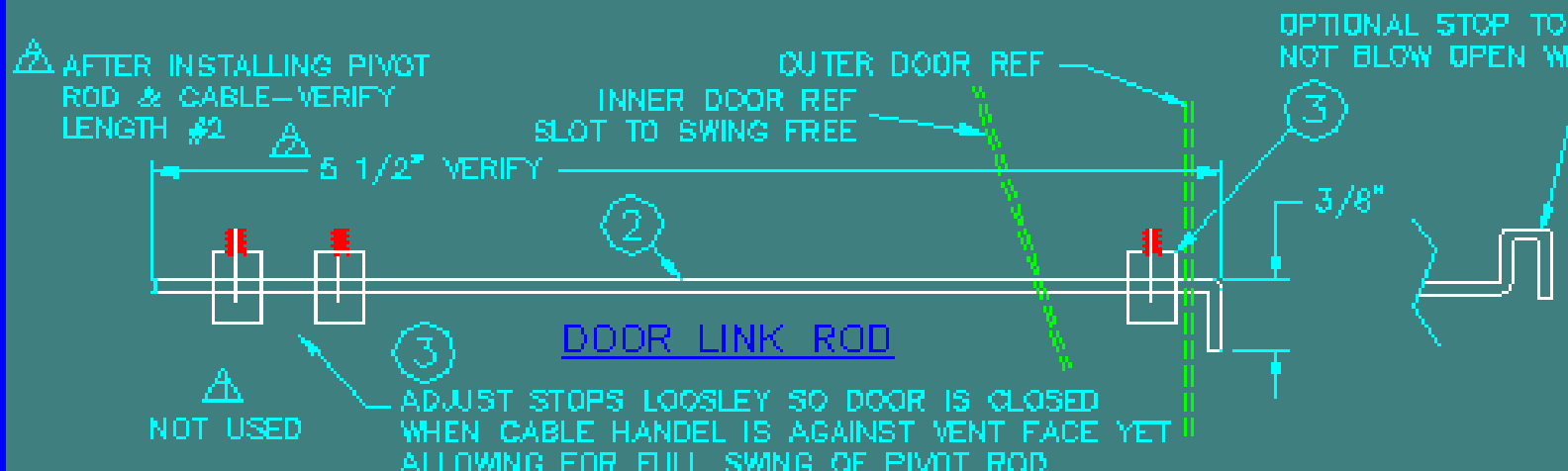
NOTE: DRAWN USING 7 OF ITEMS #5 - IF ACCESS TO PIVOT STOPS QTY OF #3 THREE QTY OF PIVOT STOPS WOULD BE 2



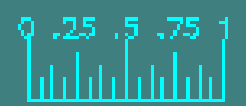
OVERALL LENGTH FROM BACK OF VENT FACE TO PIVOT ROD LOOP. VERIFY PIVOT LOOP DOES NOT TRAMLE PAST OVERCENTER IN EITHER DIRECTION BEFORE CUTTING. PIVOT ROD MUST BE INSTALLED FIRST. PIVOT ROD LOOPS SHOULD BE PERPENDICULAR TO VENT FACE AT MID STROKE OF CABLE.



(OPT IF PIVOT STOPS USED DONT BEND -ADD TO OAL) NOT USED



OPTIONAL STOP TO PUSH IF OUTER DOOR DOES NOT BLOW OPEN WHEN FAN ON. ALT HOOK END- MAY REQUIRE SLOTING HOLE (SIDE TO SIDE) TO HOOK. NOTE LINK ROD CAN BE INSERTED THRU DOOR FROM OUTSIDE. IF HOOK END USED RAISE HOLE IN DOOR(S) OUTER DOOR WILL NOT SWING FREELY

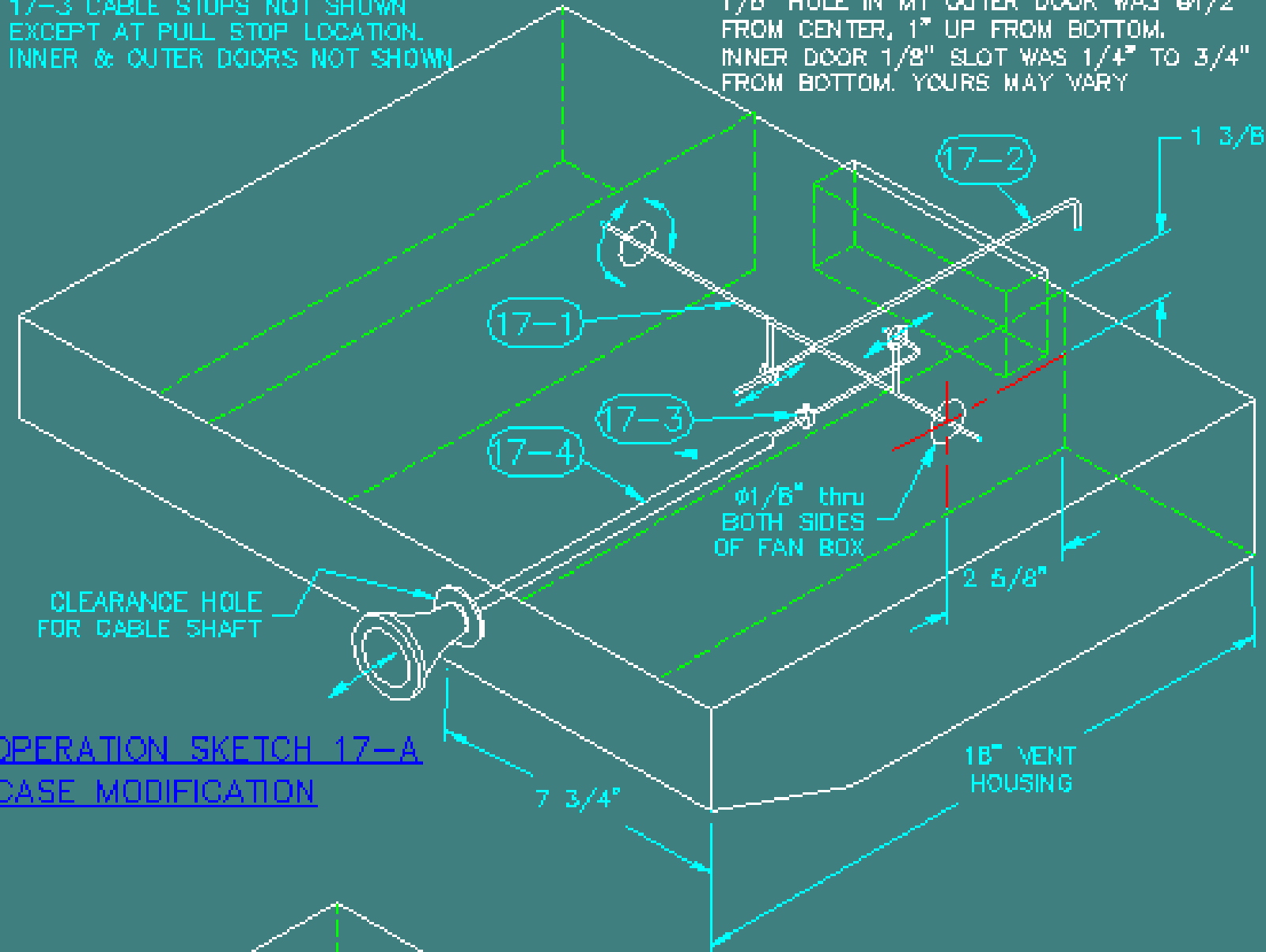


STANDARDS:		OUR ELKHORN		DESIGNED BY: DATE:	DRAWN BY: DATE:
		SAN LUIS OBISPO, CA		11	10/10/19
E /VENT		<p>THIS DRAWING HAS BEEN PREPARED FOR AND IS THE PROPERTY OF ME, DO NOT USE TO BUILD OR ORDER TO CONSTRUCT ANY ITEM, AND DESIGNED TO BE CONSIDERABLY REDUCED. IT IS TO BE USED ONLY IN CONNECTION WITH PERFORMANCE OF VENT BY ME, AND IS TO BE SCHEDULED AS-SHOWN BOTH DISBURSE AND REPARTEMENT DISBURSE TO ANY UNIT OR OFFICE. REPRODUCTION IN WHOLE OR IN PART FOR ANY PURPOSE, ANY CAUSE INJURY OR DEATH, AND IS EXPRESSLY FORBIDDEN.</p>			
		DESCRIPTION:		NO. REVISION	BY DATE
		INSIDE VENT DOOR ACTUATOR			
		18 VENTLINE SMALL DUCT			
		PRELIMINARY			
		SCALE: 1=1		REV.:	
		DRAWING NUMBER: PAGE 17 1 OF 2		VN 0	

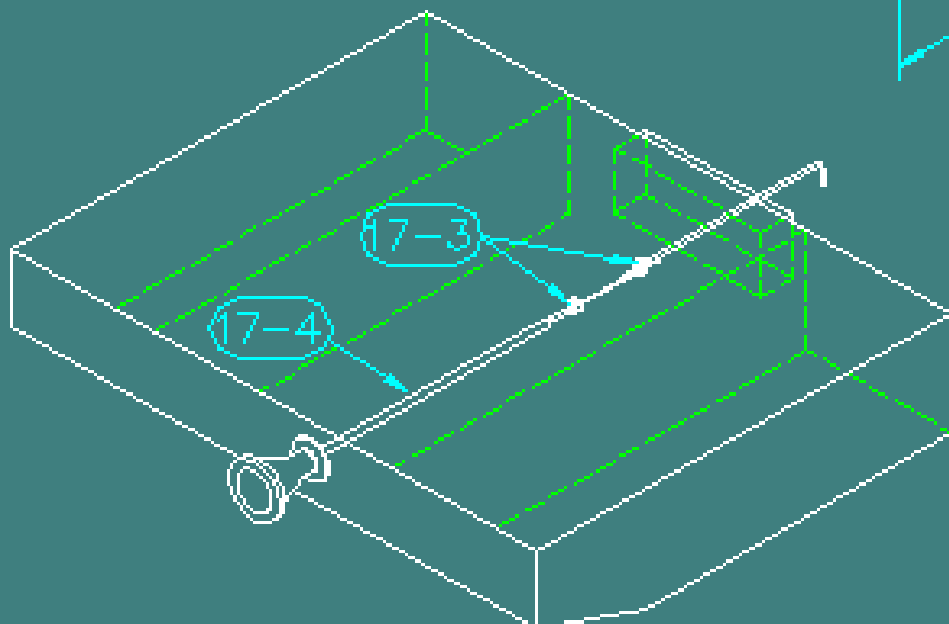
OBVIOUSLY THIS MOUNT IS CAMPER & VENT SPECIFIC. ALL DIMENSIONS ARE REFERENCE ONLY

17-3 CABLE STOPS NOT SHOWN EXCEPT AT PULL STOP LOCATION. INNER & OUTER DOORS NOT SHOWN

1/8" HOLE IN MY OUTER DOOR WAS Ø1/2" FROM CENTER, 1" UP FROM BOTTOM. INNER DOOR 1/8" SLOT WAS 1/4" TO 3/4" FROM BOTTOM. YOURS MAY VARY



OPERATION SKETCH 17-A CASE MODIFICATION

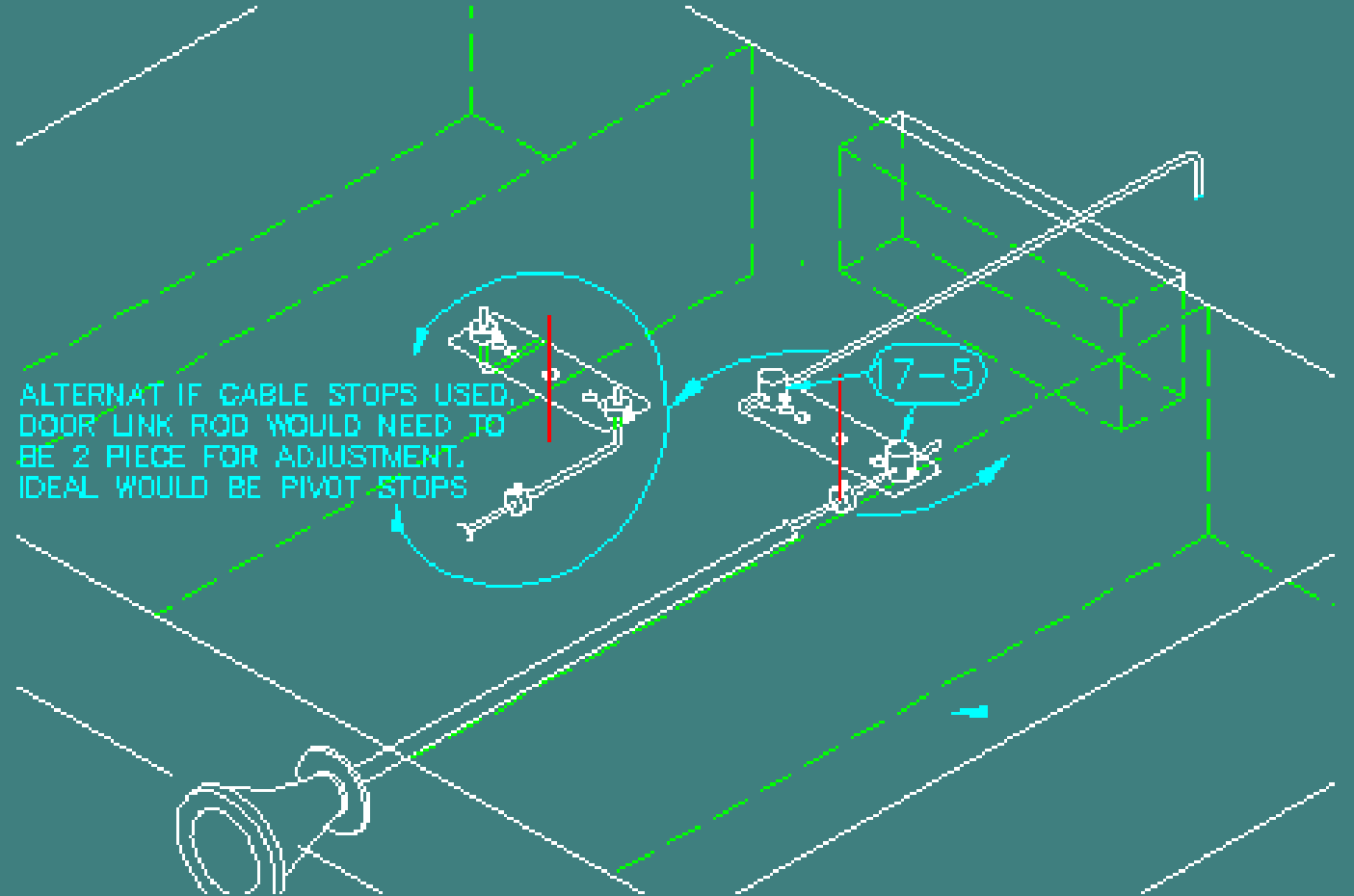


ALTERNATE CABLE PUSH/PULL

SIMPLE NON REVERSING PUSH/PULL KNOB PUSHED IN DOORS OPEN, KNOB PULLED OUT DOORS CLOSED. USE CABLE STOP 17-3 TO LIMIT DOOR CLOSED TRAVEL. CUT CABLE WIRE (OR MAKE LINK ROD) OVERLAPPING LENGTHS FOR LENGTH ADJUSTMENT AND REMOVABILITY OF VENT. USING 17-3 W/LARGER ID, ADJUST WHEN KNOB IN DOOR IS IN FULL OPEN POSITION, CLAMP 2 WIRE SECTIONS TOGETHER. PLACE ANOTHER 17-3 THAT HITS CABLE SHEATH WHEN DOOR FULLY CLOSED

BILL OF MATERIALS

ITEM NUMBER	PART NUMBER	PRICE	DESCRIPTION	TOTAL QTY	SPECIFICATION	WEIGHT (TOTALS)	PURCHASE NUMBER
17-B		1	17-A	1			



ALTERNATE USING FLAT BAR PIVOT

LENGTH OF FLAT BAR ~3-4" \SET SO YOU HAVE MIN OF 1 1/2 TRAVEL A CENTER STAND OFF REQUIRED FOR PIVOT BAR-NOT DRAWN...PIVOT 17-5 SHOWN UP FOR CLARITY SHOULD BE MOUNTED ON OTHER SIDE OF BAR. CHANGING DISTANCE FROM CENTER WILL CHANGE RELATION SHIP OF TRAVEL BETWEEN DOOR LINK ROD & CABLE HANDLE.



STANDARDS:		OUR ELKHORN		DATE: 04/07/12	
		SAN LUIS OBISPO, CA.		BY: [Signature]	
		THIS DRAWING HAS BEEN SPECIFIED FOR AND IS THE PROPERTY OF US. DO NOT USE OR REPRODUCE OR MAKE TO CONTRACT WITHOUT OUR WRITTEN PERMISSION. IT IS TO BE USED ONLY IN CONNECTION WITH PERFORMANCE OF WORK BY US, AND IS TO BE SAFEGUARDED AGAINST LOSS, DESTRUCTION, AND IMPROPER DISSEMINATION TO ANY PART OR PERSON. REPRODUCTION IN WHOLE OR IN PART FOR ANY PURPOSE MAY CAUSE INJURY OR DEATH, AND IS EXPRESSLY FORBIDDEN.		DESCRIPTION: VENT DOOR ACTUATOR OPTIONS 18 VENTLINE SMALL DUCT PRELIMINARY	
B	/VENT	SCALE: 1=1		REV. 0	
		DRAWING NUMBER: PAGE 2 OF 2		WN 0	