

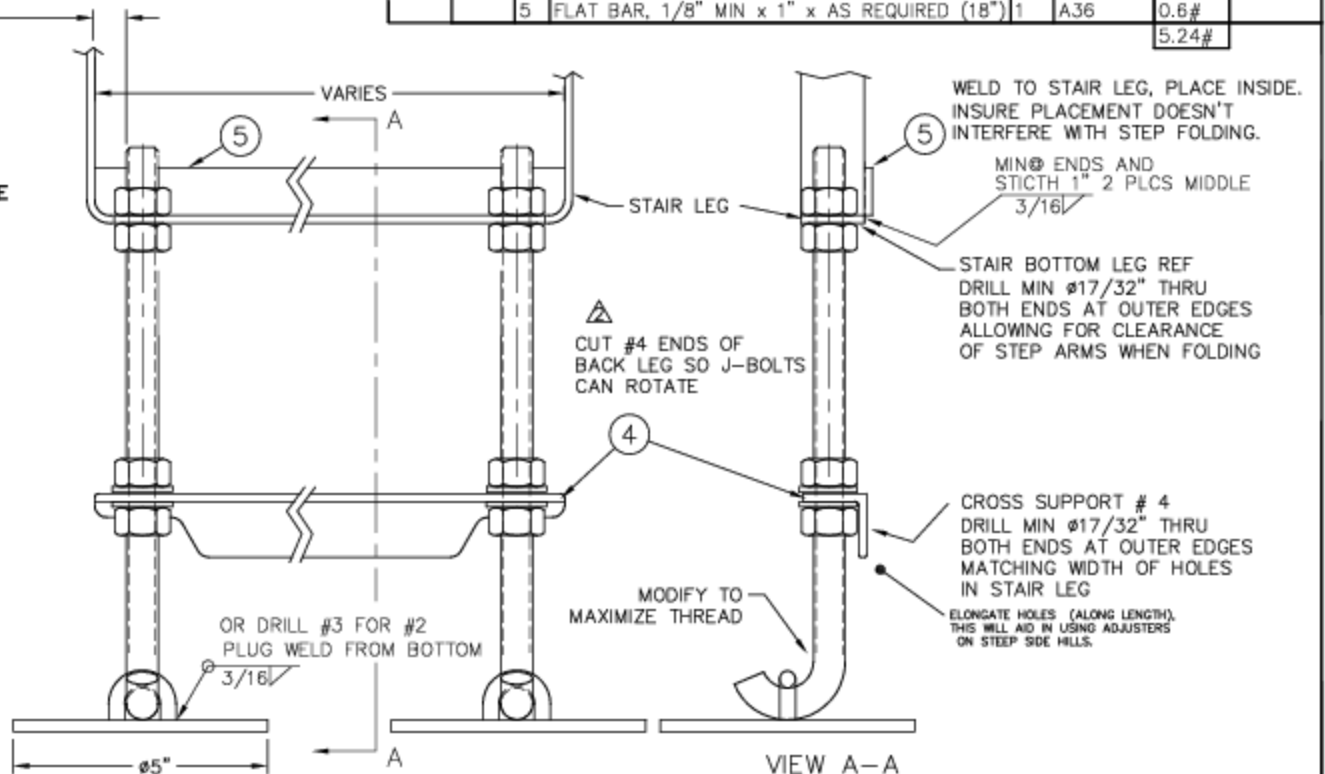
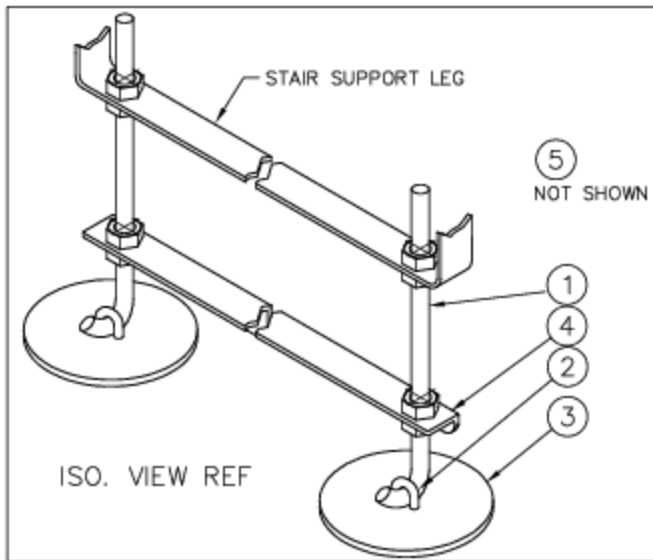
QUANTITIES LISTED IN MATERIALS LIST ARE FOR ALL PARTS.  
 18" LENGTH FOR ITEM 4, ADJUST AS REQUIRED FOR STEP WIDTH  
 ITEM 5 OPTIONAL BUT RECOMMENDED IF YOUR STEP BASE IS FLAT BAR

### BILL OF MATERIALS

FIELD ASSEMBLY	MARK	DESCRIPTION	TOTAL QTY.	SPECIFICATION	WEIGHT (TOTALS)	PURCHASING NUMBER
17-A	1	J BOLT OR EYE BOLT, 1/2-13 x AS REQUIRED (9") W/8 NUTS, 4 FLAT WASHERS (ALT.MAT. ALL THREAD)	2	A36	1.9#	
	2	HALF LINK CHAIN OR UBOLT 5/16" (1/4" MIN)	2	A36	0.08#	
	3	PLATE 3/16" x #5" (4" MIN)	2	A36	2#	
	4	ANGLE, 1/8" MIN x 1" x AS REQUIRED (18")	1	A36	1.2#	
	5	FLAT BAR, 1/8" MIN x 1" x AS REQUIRED (18")	1	A36	0.6#	
					5.24#	

ENSURE ENOUGH INBOARD  
 PLACEMENT SO STEPS ARMS  
 DO NOT HIT J-BOLTS WHEN FOLDING.  
 OTHERWISE JBOLTS WILL NEED TO BE REMOVED

#2 HALF LINK OF CHAIN, UBOLT ETC.  
 INSURE JBOLT/EYEBOLT CAN ARTICULATE & SLIDE FREELY  
 WITHOUT EXCESSIVE SLOP, JBOLT WILL ALLOW REMOVAL OF BASE



THERE'S A MILLION WAYS TO ADD ADJUSTABILITY TO YOUR STEPS. I ONLY SUPPLY THIS DRAWING AS AN EXPLANATION OF WHAT WE USE. INTENT OF DESIGN IS FOR SIMPLE ADJUSTMENT ON UNEVEN GROUND. HOWEVER I USE TO RAISE ENTIRE STEP ASSEMBLY WHEN REAR OF CAMPER IS TOO HIGH, AND USE A SEPARATE STEP ATTACHED TO STAIRS. IF YOU ONLY ARE ADDING THE ABILITY TO ADJUST FOR UNEVEN GROUND YOUR BOLTS WOULD BE LESS THAN 9" I USE & BRACE #4 MAY NOT BE NEEDED.

warning ADJUSTERS WILL ALLOW QUITE A BIT OF COMPENSATION FOR UNLEVELED GROUND AND PROVIDE SUPPORT, HOWEVER END OF STEP WILL STILL TRY TO 'WALK' DOWNHILL. ESPECIALLY IF GROUND WET/SLICK OR LOOSE. TENT STAKES ON DOWNHILL SIDE MAY HELP. USE EXTREME CAUTION IF MORE THAN 2" DIFFERENCE BETWEEN ADJUSTERS. DON'T USE IF YOUR STEPS ARE NOT SECURELY ATTACHED @ TOP TO CAMPER!

AS DRAWN, AT MAX ADJUSTED HEIGHT, REQUIRES USE OF SEPARATE STEP.  
 F.Y.I.: THE ACTION OF STEPPING DOWN OFF OF A STAIR STEP ONTO A LOOSE OBJECT (IE STOOL ETC) USUALLY GENERATES AN OUTWARD FORCE AND LOOSE OBJECT WANTS TO SLIDE OR ROLL AWAY, AGAIN USE CAUTION.

OUR ELKHORN SAN LUIS OBISPO, CA		2 - HODDY # & NUTS 1 - HODDY ADJ AND WASHER HOODY HOLES ALL DIMENSIONS IN INCHES DATE:	02/25/07 SCALE: N.T.S. REV. 2
STANDARDS:	THIS DRAWING HAS BEEN PREPARED FOR AND IS THE PROPERTY OF ME. DO NOT USE TO BUILD OR CAUSE TO CONSTRUCT ANY ITEM. THIS DRAWING IS TO BE USED ONLY IN CONNECTION WITH PERFORMANCE OF WORK BY ME, AND IS TO BE SAFEGUARDED AGAINST BOTH DELIBERATE AND INADVERTENT DISCLOSURE TO ANY IDIOT OR MORON. REPRODUCTION IN WHOLE OR IN PART FOR ANY PURPOSE MAY CAUSE INJURY OR DEATH, AND IS EXPRESSLY FORBIDDEN.	DESCRIPTION: <b>SCISSOR STEP ADJUSTER</b> INDIVIDUAL ARTICULATING ADJUSTERS PRELIMINARY	DRAWING NUMBER: S1